

# Consumer Recall Notice

## SMA Infant Formula and Follow-On Formula

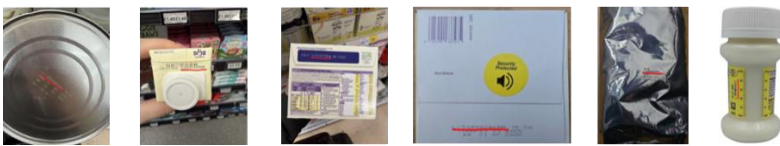


*\*designs may vary*

The safety and wellbeing of babies is our absolute priority. As a precautionary measure, Nestlé is voluntarily recalling specific batches of its SMA infant formula and follow-on formula.

This is due to the potential presence of cereulide in the batches concerned.

Batch codes can be found on the base of the tin or box for powdered formulas or the base of the outer box and on the side / top of the container for ready-to-feed formulas.



There have been no confirmed reports of any illness associated with consumption of the products concerned. Nevertheless, out of an abundance of caution, Nestlé has decided to perform this voluntary product recall in line with our strict product quality and safety protocols.

Consumers who may have these batches should not feed this product to their baby.

If you have purchased one of these batches, please share a photo of the product and the batch code via <https://www.nestle.co.uk/en-gb/getintouch> or by calling our careline on **0800 0 81 81 80** (UK) **1800 931 832** (Ireland) and we will refund you.

If you have been prescribed one of these batches listed please destroy the product and speak to your Healthcare Professional for advice on an alternative.

Anyone concerned about their baby's health should contact a healthcare professional.

All other Nestlé products and other batches of the same product that are not in the scope of this voluntary recall are safe to consume.

We understand that this news may cause concern for parents, and we sincerely apologise for any concern or inconvenience caused to parents, caregivers, and customers.

A full list of products and batch numbers can be found here:

Product	Batch	Product	Batch
SMA Advanced Follow on Milk 800g	52879722AA	SMA Lactose Free 400g	51719722BA
SMA Advanced First Infant Milk 800g	52319722BA		51759722BA
	52819722AA		51829722BA
	51240742F2		51979722BA
	51890742F2		52109722BA
	51450742F1		53299722BA
SMA First Infant Milk 800g	51170346AA		53459722BA
	51170346AB		51150346AB
	51340346AB		51500346AB
	51580346AA	SMA Anti Reflux 800g	51570742F3
	51590346AA		52099722BA
	52760346AB		52099722BB
	52760346AD		52739722BA
	52780346AA	SMA Alfamino 400g	51200017Y3
SMA First Infant Milk 400g	51350346AA		51210017Y1
	52750346AD		51220017Y1
SMA First Infant Milk 1.2Kg	51340346BE		51250017Y1
	52740346BA		51390017Y1
	52750346BA		51420017Y2
SMA LITTLE STEPS First Infant Milk 800g	52740346AD		51430017Y1
	51220346AD		51460017Y1
	51540346AC		51690017Y2
SMA Comfort 800g	52620742F3		51690017Y3
	51240742F3		51700017Y1
	51439722BA		51710017Y1
	51479722BA		51740017Y1
	51769722BA		52760017Y5
	52049722AA		52790017Y1
SMA First Infant Milk 200ml	52860295M		52860017Y1
	52870295M		53100017Y3
	53220295M		53110017Y1
	53230295M		53140017Y1
	52870295M		53140017Y2
	53030295M		53150017Y1
	53040295M		
	53070295M		
	53080295M		
SMA First Infant Milk 70ml	53170742B1		